

TOLERANCES IN PANEL CUTTING

TOLERANCES IN PANEL CUTTING

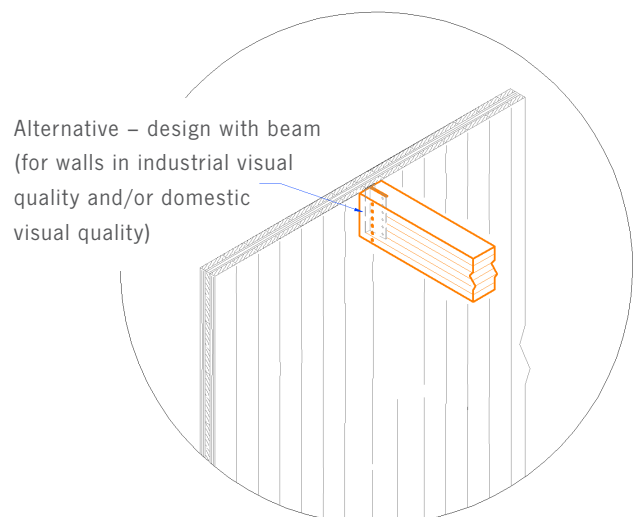
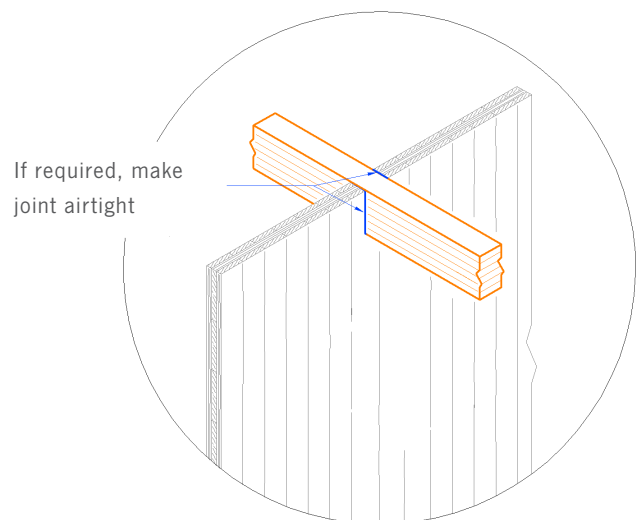
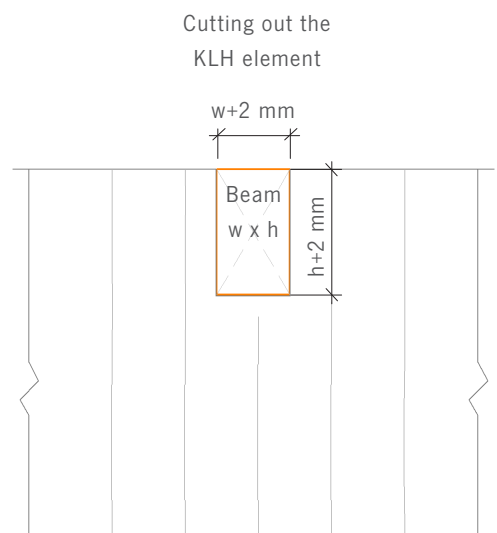
In principle, cutting tolerances for wall, ceiling and roof panels made of timber are defined in DIN 18203/ Part 03. The cutting tolerances refer to each respective cut-to-size element.

The cutting accuracy of KLH Massivholz GmbH is within a range of ± 2 mm with wood moisture of 12%. With these values we are considerably below the values allowed as per standard. The tolerance of ± 2 mm applies to standard cutting services and standard panel types according to our price list, from a minimum element size of 1 m².

When panels are to be worked on on both sides, the tolerance value indicated by us always relates to the first side to be dealt with. Due to the turning of the element tolerances could be slightly higher on the second side.

When work is to be carried out depthwise on the panels or with small-size panel cuts and/or special cuts, tolerances of approx. 2 mm should already be planned in detail – see the following sketches. In the case of special cuts we recommend adjustment on alternating sides.

JOIST BEARING - NOTCHING OF WALL ELEMENTS

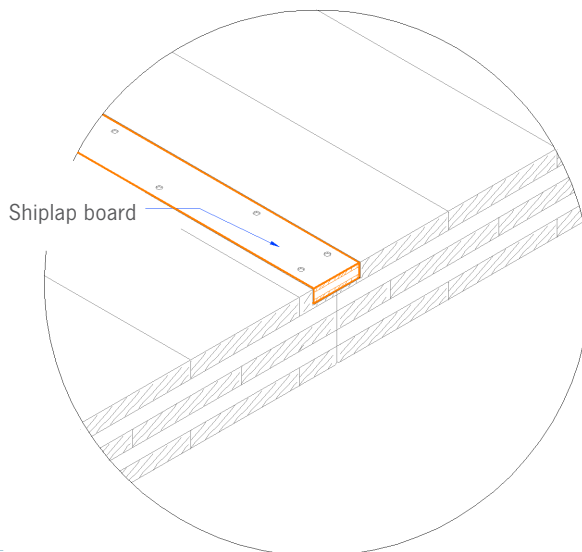
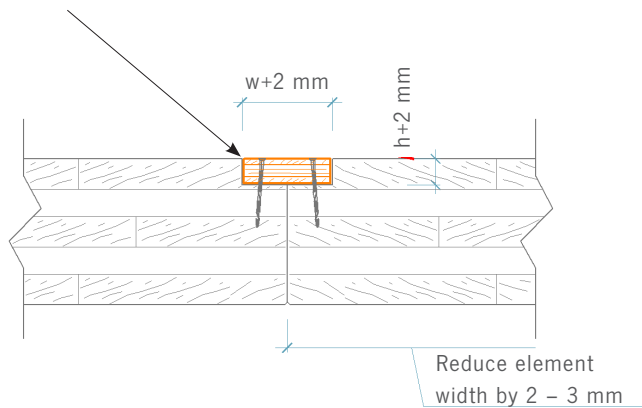


TOLERANCES IN PANEL CUTTING

CONNECTION OF PANEL WIDTH – SHIPLAP BOARD

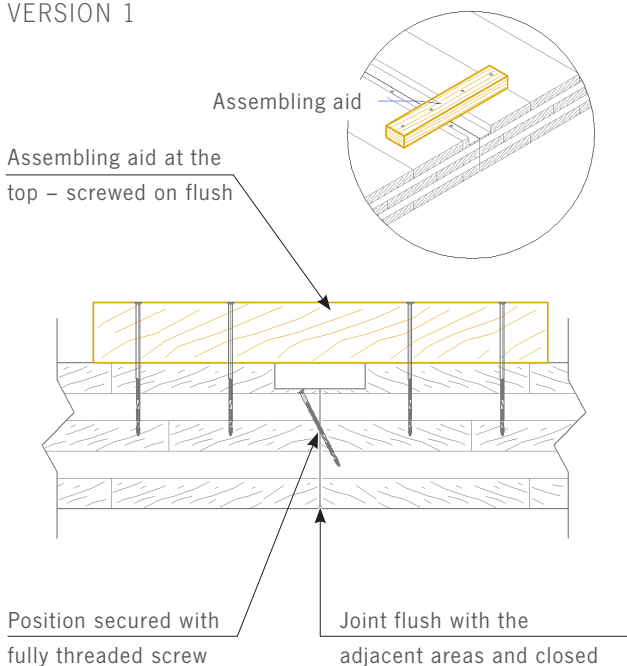
PREFERRED FOR CEILINGS IN INDUSTRIAL VISUAL QUALITY AND/OR DOMESTIC VISUAL QUALITY (CHECK STATIC REQUIREMENTS)

Shiplap board $w \times h$ made of multi-layer panel (e.g. strip of three-layer panels or plywood)

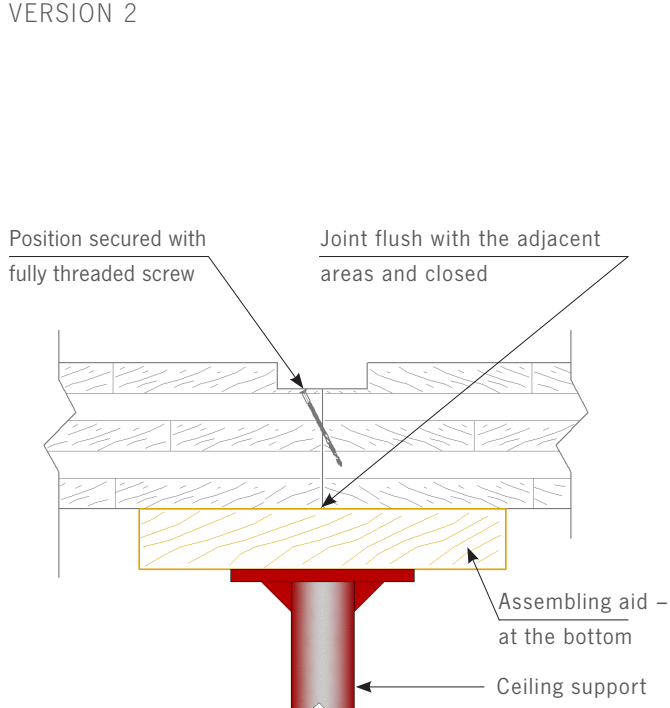


ASSEMBLY INSTRUCTIONS – VERSION 1 AND 2

VERSION 1

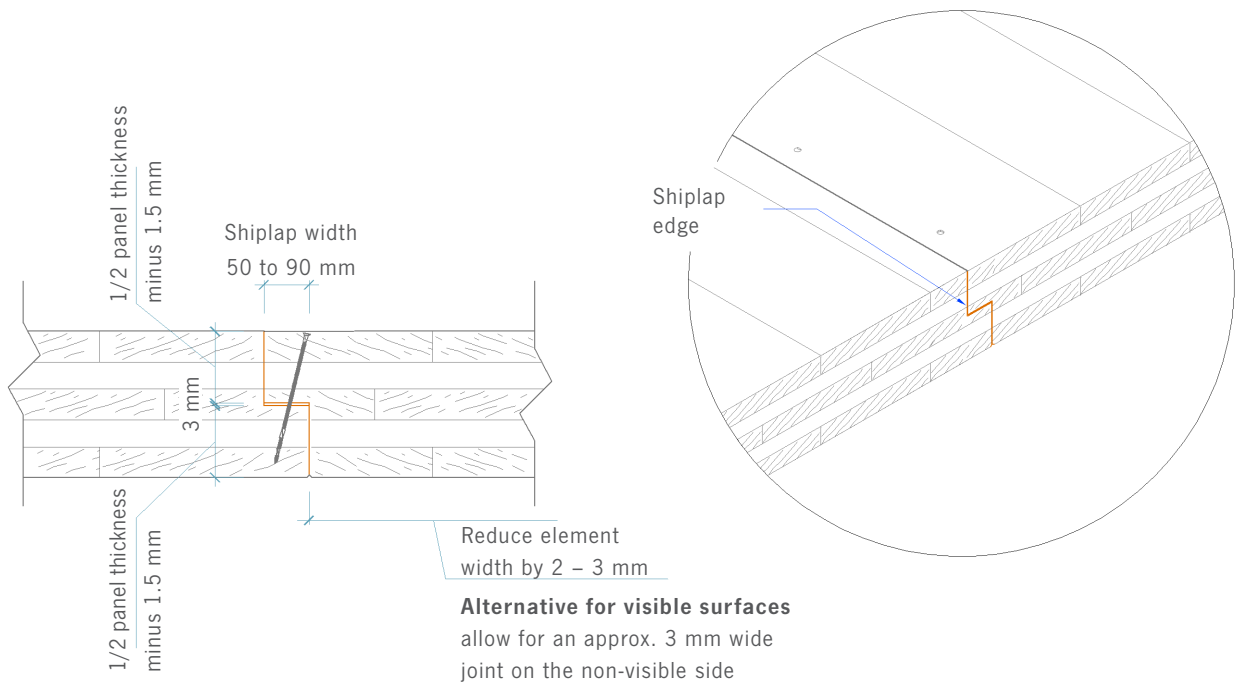


VERSION 2



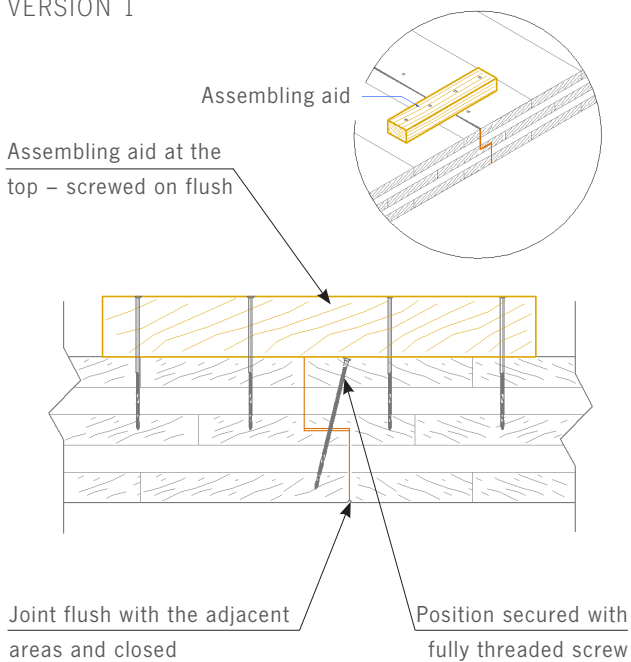
TOLERANCES IN PANEL CUTTING

CONNECTION OF PANEL WIDTH - SHIPLAP EDGE



ASSEMBLY INSTRUCTIONS - VERSION 1 AND 2

VERSION 1



VERSION 2

